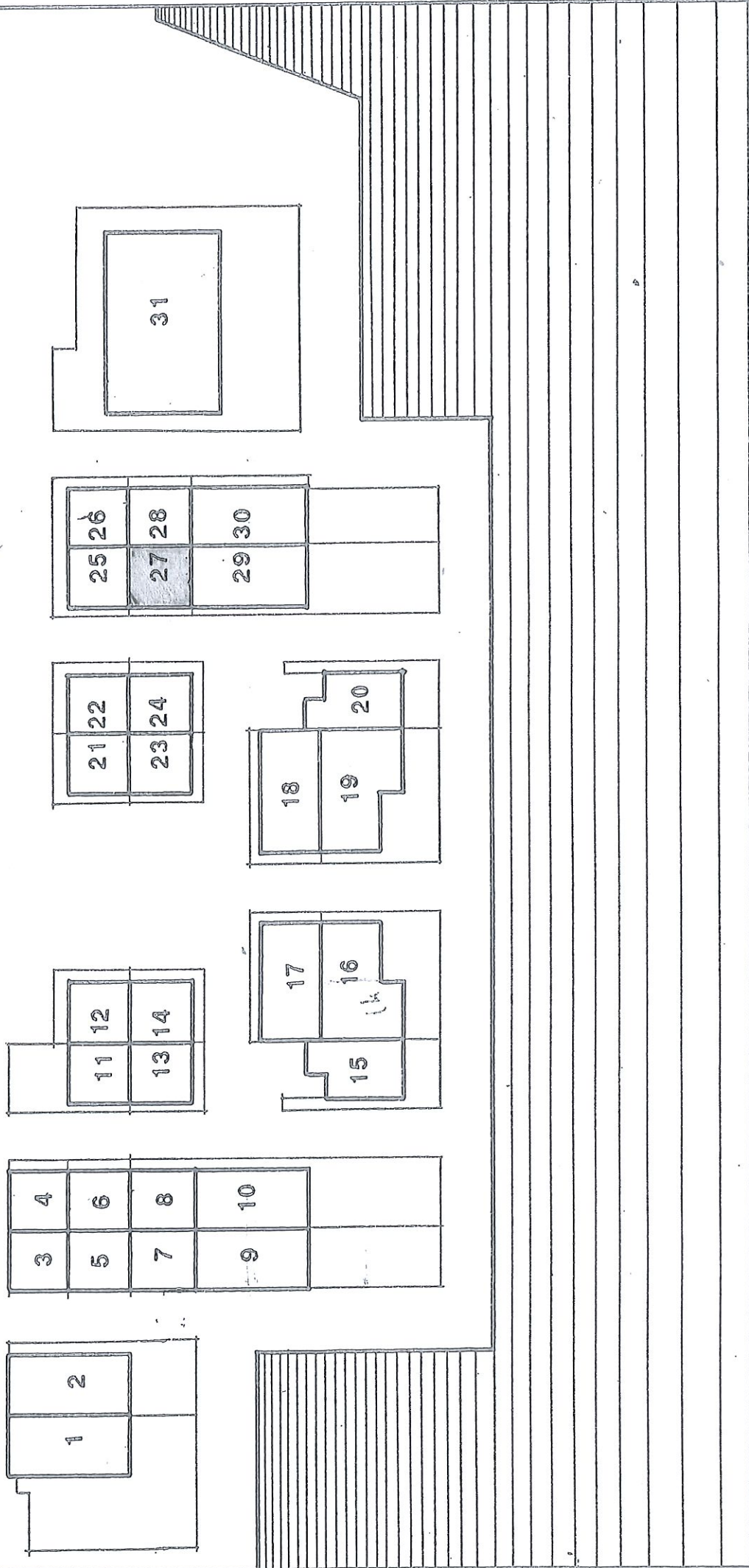


# REPARTITION PAR LOTS



# CARRE DU NOUVEAU PORT DE LA LONDE

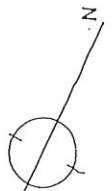
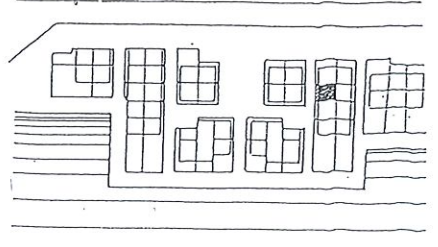
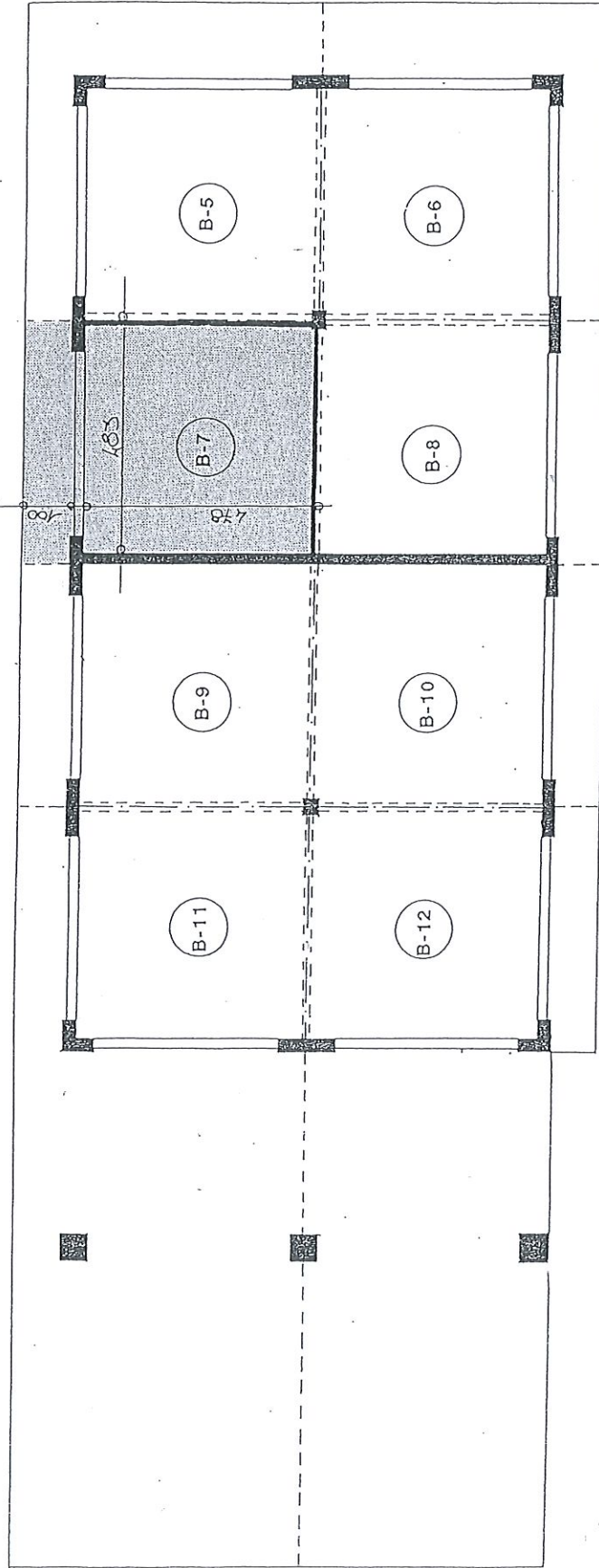
MAITRE D'OUVRAGE : MAIRIE DE LA LONDE

COMMERCIALISATION : SEMAG HOTEL DE VILLE

ARCHITECTE : ARCHI 2000 S. AV. G. CLEMENCEAU LA LONDE

TEL: 94.66.80.93

TEL: 94.66.63.97



ENSEMBLE

LOT N° 27

CELLULE B-7